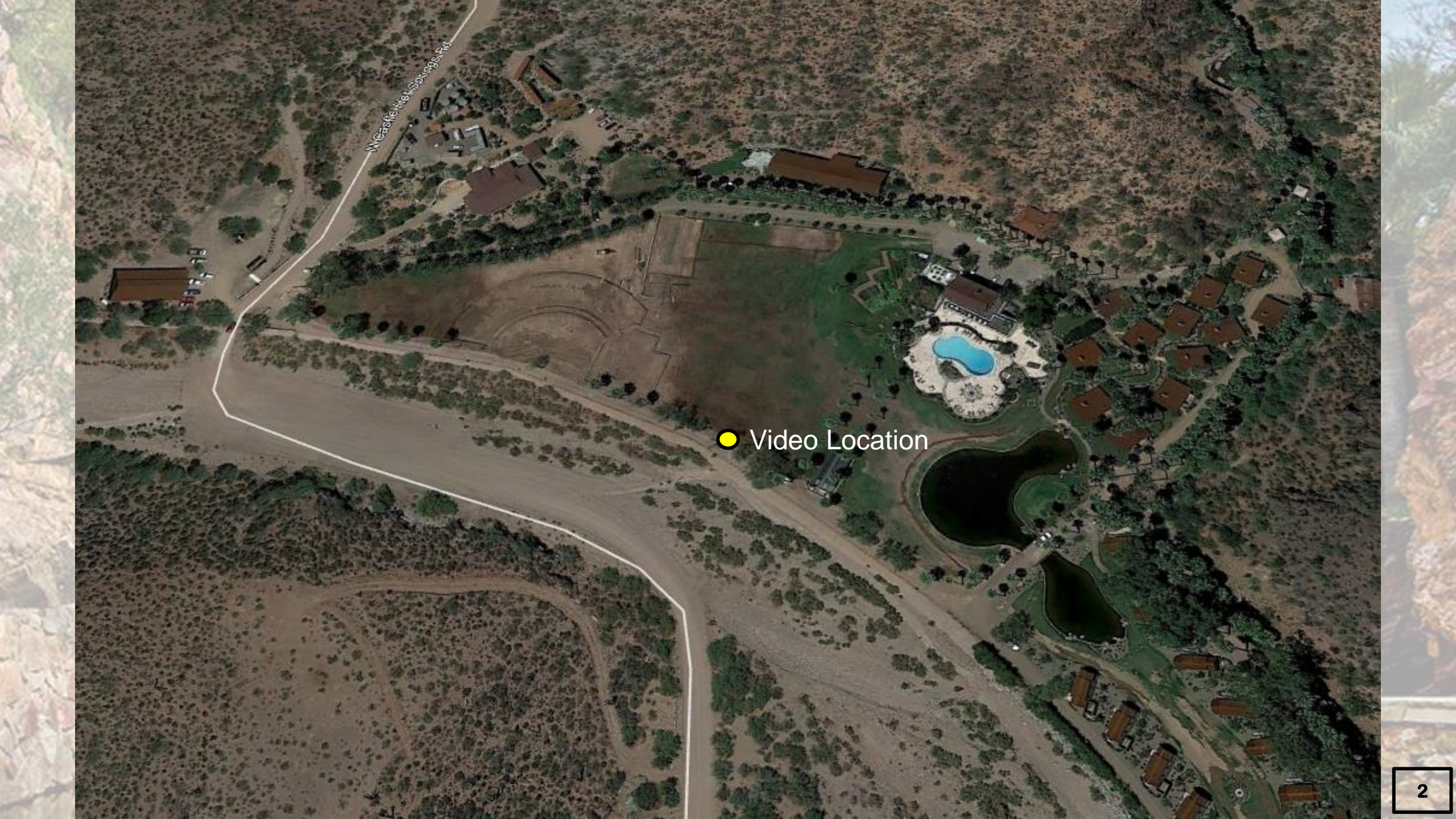


Castle Hot Springs



Spring 2021

An aerial photograph of a golf course and surrounding area. A yellow dot is placed on a path, with the text "Video Location" next to it. The golf course features several green fairways, a large sand trap, and a clubhouse with a pool. A road labeled "W Castle Rock Springs Rd" runs along the top left. The surrounding landscape is arid with sparse vegetation.

● Video Location

Severe Road Issues During Weather Events



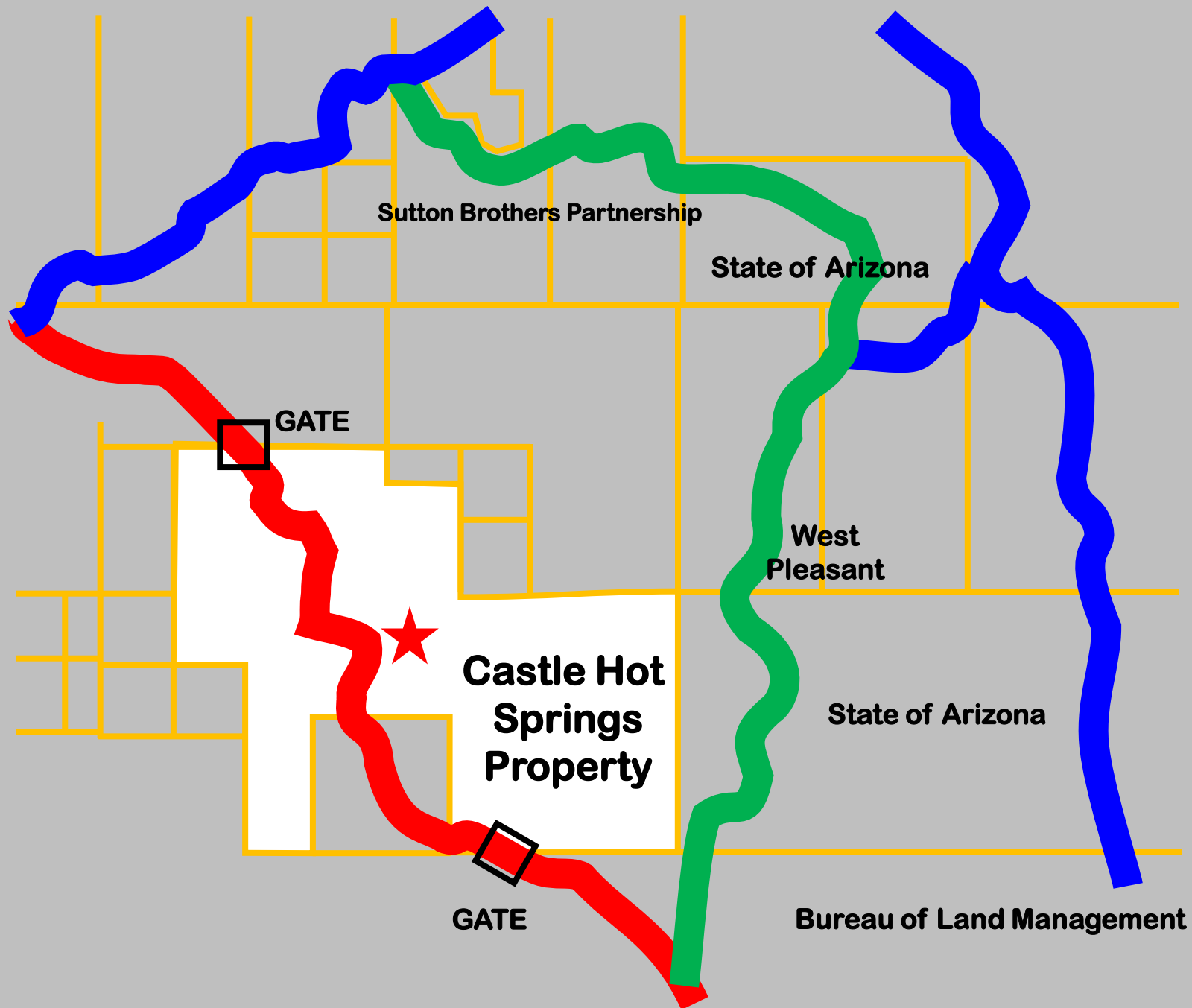
**Roads Are Destroyed After
Each Major Flooding Event!**

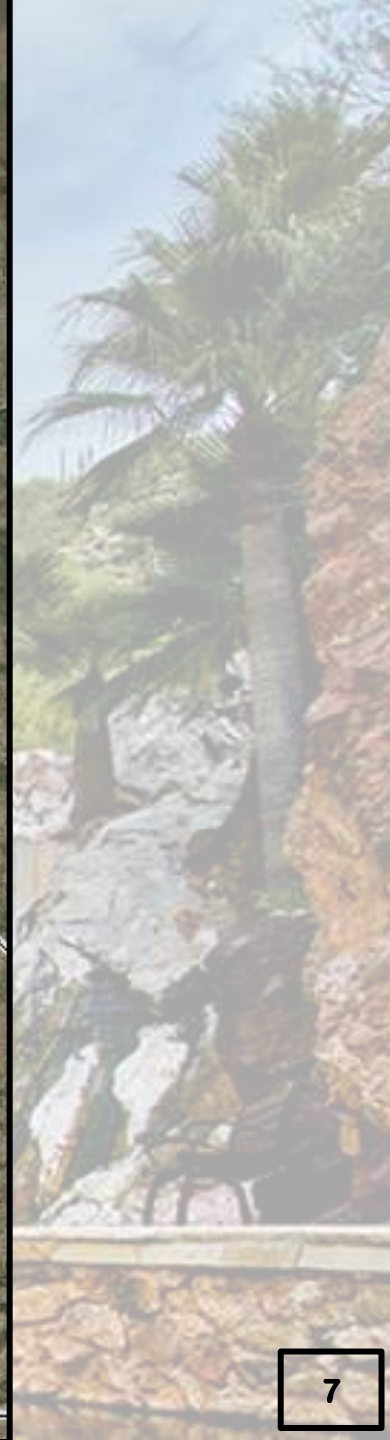
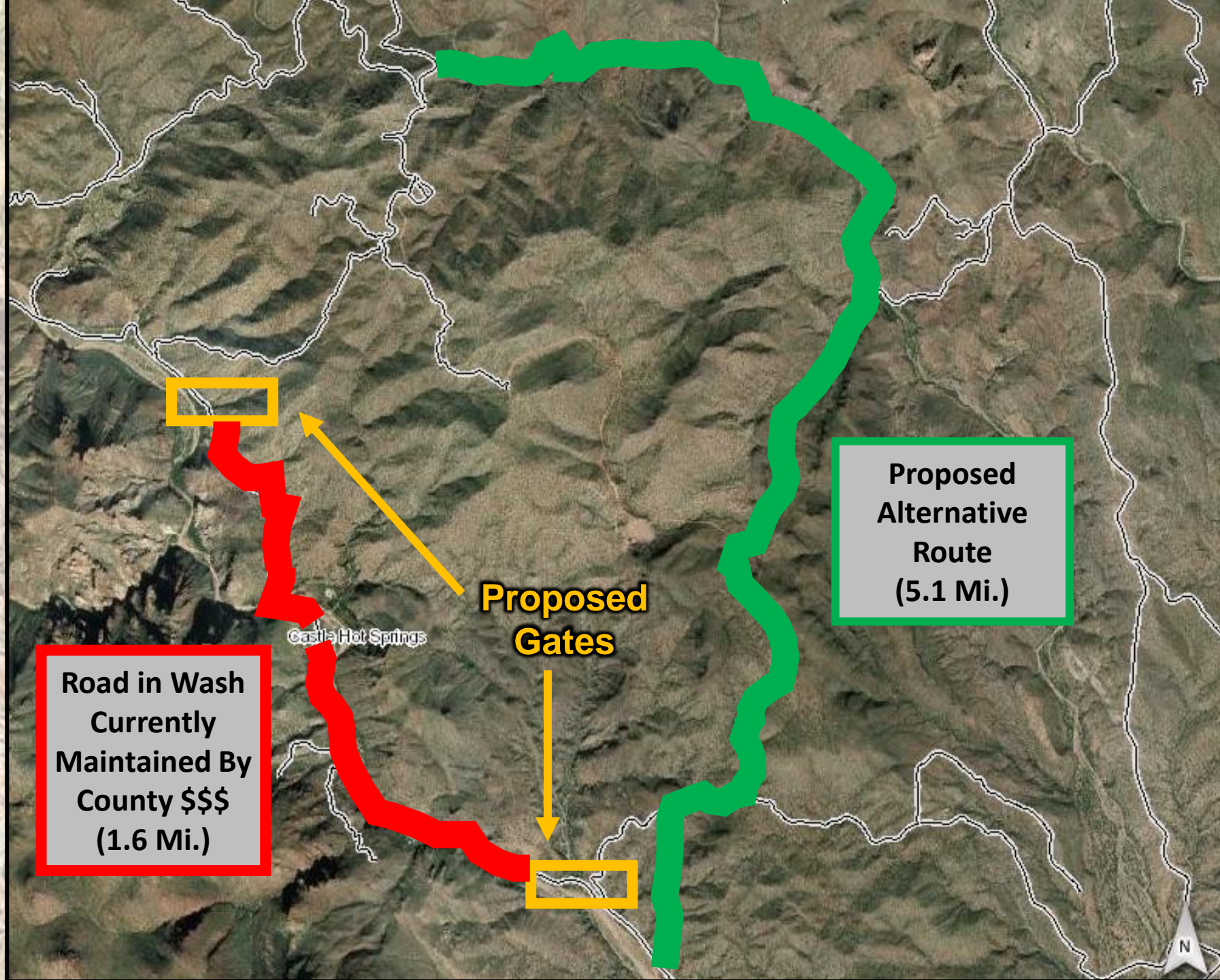




Roadway through river creates large dust issues during dry seasons







Castle Hot Springs

AZ State Land

Proposed Gate

B.L.M.

N-Castle-Hot-Springs Rd

PRIVATE
ROAD
AHEAD
NO
ACCESS
TURN
RIGHT



Previous Challenges Resolved!!!!

All affected property owners OK solution

Property Owners to supplement increase in maintenance by County for new road

Owners to take over maintenance for all driveways behind gates

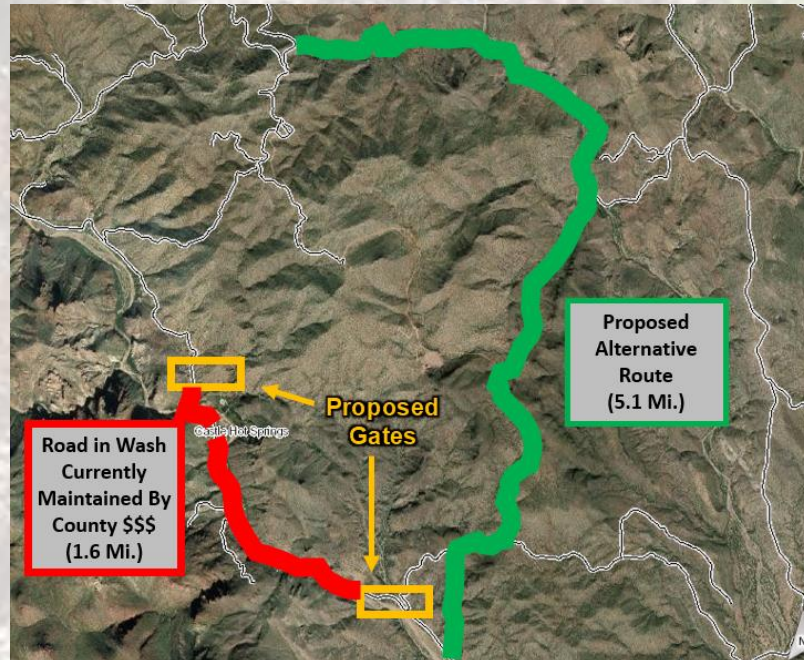
New road built to higher standards than previous wash route

Existing Trails Through The Wash



- Utilizing Existing 1800's Trails
- Required Maintenance After Each Weather Event
- Unstable Watershed

VERSUS



Improved Roads



- Safe Engineer Designed Road
- Minimal Yearly Maintenance
- Cost To Maintain Shared By Residents

A vibrant rainbow arches across a dark, stormy sky. Below the rainbow, a landscape features a dense grove of tall palm trees. In the middle ground, a two-story yellow house with a red roof is visible, nestled among the trees. The foreground is a green lawn.

THANK YOU!